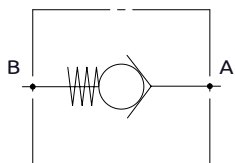
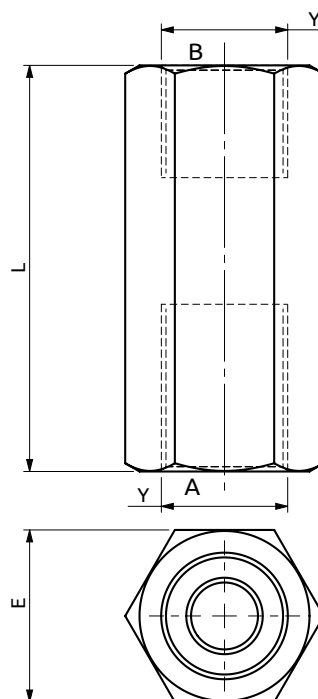
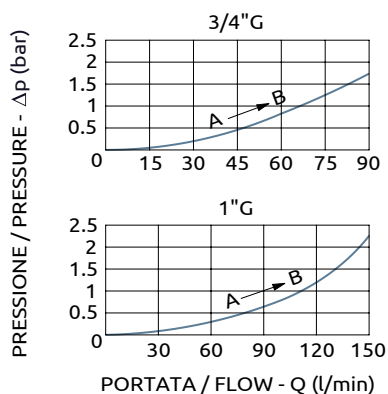




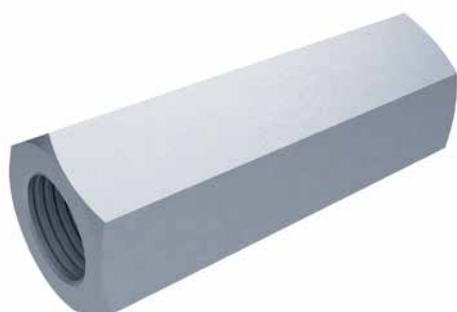
Valvola unidirezionale Check valve



CURVE CARATTERISTICHE
PERFORMANCE CURVES



90	HEX42	1"G
85	HEX36	3/4"G
L	E	Y



DESCRIZIONE

Sono valvole on/off che consentono flusso libero in un verso e lo bloccano nel verso contrario. Vengono realizzate in corpi esagonali in acciaio adatti ad essere montati in linea con i tubi. Sono disponibili con 3 diversi valori di taratura: 0.5 bar, 2 bar, 5 bar.

DESCRIPTION

These valves allow free flow in a direction and stop it in the opposite direction. They are built in hexagonal bodies made of steel, suitable to be mounted in line with the hoses. They are available with 3 different setting values: 0.5 bar, 2 bar, 5 bar.

Codice Ordinazione	Taratura Standard	Portata Massima	Pressione Max	Dimensione Porte	Peso
Ordering Code	Standard Setting	Max Flow	Max Pressure	Port Size	Weight
A120600.01.00	0.5 bar	90 l/min	700 bar	3/4"G	0.42 kg
A120600.02.00	2 bar	90 l/min	700 bar	3/4"G	0.42 kg
A120600.03.00	5 bar	90 l/min	700 bar	3/4"G	0.42 kg
A120800.01.00	0.5 bar	150 l/min	700 bar	1"G	0.48 kg
A120800.02.00	2 bar	150 l/min	700 bar	1"G	0.48 kg
A120800.03.00	5 bar	150 l/min	700 bar	1"G	0.48 kg